

METHODIST GIRLS' SCHOOL (PRIMARY)  
CONTINUAL ASSESSMENT 1 – 2006  
PRIMARY 3  
SCIENCE

Name : \_\_\_\_\_ (     )

Class : Primary 3. \_\_\_\_\_

Date : 7<sup>th</sup> March 2006

Part	Maximum Marks	Marks Obtained
A	30	
B	20	
Total Marks	50	

Parent's Signature : \_\_\_\_\_

**Section A : ( 30 marks )**

Read each question carefully. Choose the most suitable answer and write its number 1, 2, 3 or 4 in the brackets provided.

1. Living things \_\_\_\_\_ to ensure the continuity of their own kind on earth.

- (1) reproduce
- (2) move on their own
- (3) response to changes
- (4) move away from danger

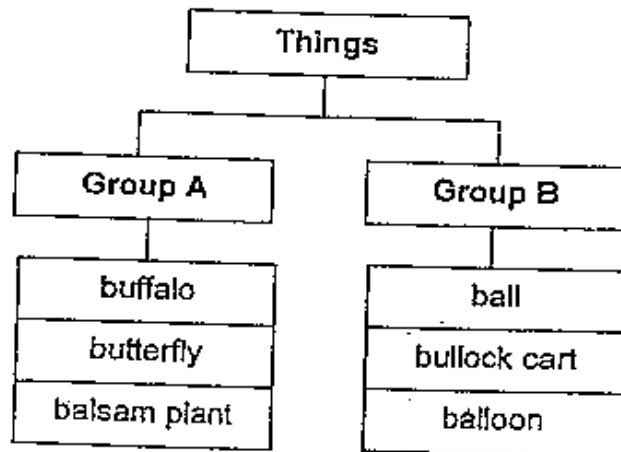
( )

2. Susan told her father that there were many beautiful and fragrant flowers in the garden. She had used her sense of \_\_\_\_\_ to make the observation.

- (1) taste and sight
- (2) sight and touch
- (3) sight and smell
- (4) touch and smell

( )

3. Look at the classification table below.



Which one of the following can be placed under Group A?

- (1) ball
- (2) bee
- (3) button
- (4) bolster

( )

4. 4 girls were told to group the following living things correctly.



Euglena



Alga



Desmid

- Ann said : "They are fungi."  
Betty said : "They are plants."  
Carrie said : "They are animals."  
Dennis said : "They are micro-organisms."

Which one of the following girls has grouped the living things correctly?

- (1) Ann  
(2) Betty  
(3) Carrie  
(4) Dennis

( )

5. Which of the followings are needed by plants to make their own food?

- A : water  
B : oxygen  
C : sunlight  
D : carbon dioxide

- (1) A and B  
(2) C and D  
(3) A, B and C  
(4) A, C and D

( )

6. Study the table carefully.

Properties	Organism X	Organism Y	Organism Z
Able to make food?	No	No	Yes
Need air, water and food?	Yes	Yes	Yes
Able to move about by itself?	Yes	No	No

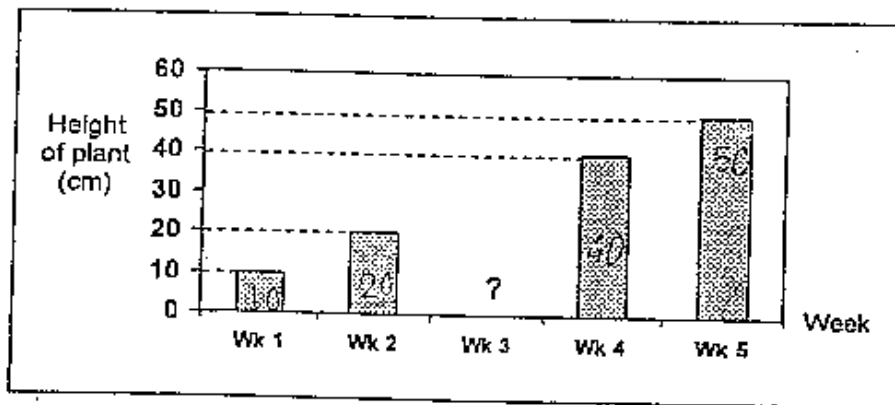
What can X be?

- A : A rat  
B : An elephant  
C : A coconut tree

- (1) A only  
(2) B only  
(3) C only  
(4) A and B

( )

7. The graph below shows the growth of a young plant over 5 weeks.



What is the likely height of the plant in Week 3?

- (1) 10 cm to 14 cm  
(2) 14 cm to 20 cm  
(3) 25 cm to 30 cm  
(4) 40 cm to 45 cm

( )

8. Study the classification table below.

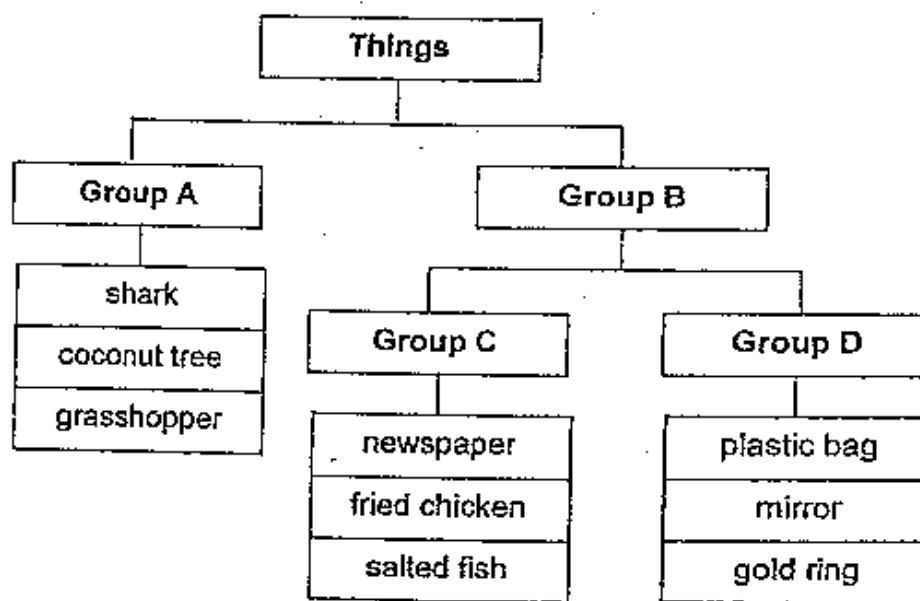
Scale	Hair	Feather
guppy	dog	duck
swordtail	penguin	chicken

Which of the animal above is placed under the wrong heading?

- (1) guppy
- (2) chicken
- (3) penguin
- (4) swordtail

( )

9. The classification diagram below shows how things are grouped.



Which one of the following sets of heading best describes A, B, C and D?

	A	B	C	D
(1)	Animals	Non-living Things	Once Alive	Never Alive
(2)	Non-living Things	Living Things	Never Alive	Once Alive
(3)	Plants	Animals	Living Things	Never Alive
(4)	Living Things	Non-living Things	Once Alive	Never Alive

( )

10. Which one of the following animal has young that does not look like its parent?

(1)



(2)



(3)



(4)



( )

11. Grace was blindfolded. She was then given a piece of tracing paper and a piece of sandpaper of the same size. Which sense could she use to differentiate the tracing paper from the sand paper?  
She could use her sense of \_\_\_\_\_.

- (1) sight
- (2) taste
- (3) touch
- (4) hearing

( )

12. Ferns and mosses are examples of \_\_\_\_\_.

- (1) fungi
- (2) flowering plants
- (3) micro-organisms
- (4) non-flowering plants

( )

13. Fungi are not considered as plants because they \_\_\_\_\_.

- (1) can grow anywhere
- (2) are smaller than plants
- (3) cannot make their own food
- (4) are not as beautiful as plants

( )

14. Study the table below.

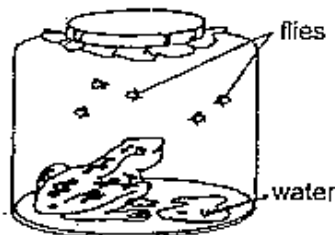
Characteristics	A	B	C
make its own food			✓
can be seen with naked eye	✓		✓

Which of the following best described B?

- (1) hibiscus
- (2) amoeba
- (3) toadstool
- (4) bracket fungi

( )

15. The diagram below shows a frog which is placed in a sealed glass jar.



After two days, the frog was found dead.

Which of the following is most likely to cause the frog to die?

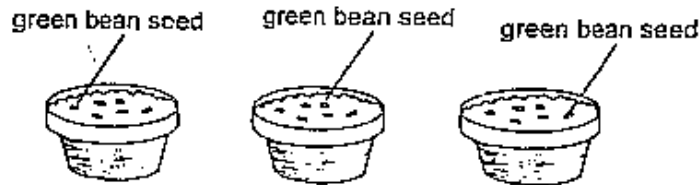
- (1) There is not enough air in the jar.
- (2) There is not enough food in the jar.
- (3) There is not enough water in the jar.
- (4) There is not enough space for the frog to move.

( )

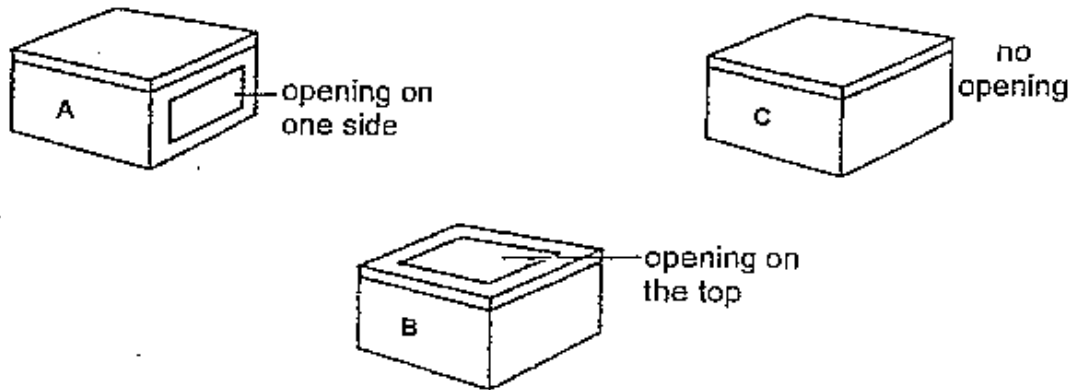
**Section B : ( 20 marks )**

**Write your answers in the space provided.**

16. Lydia put some green beans on damp cotton wool in three pots.

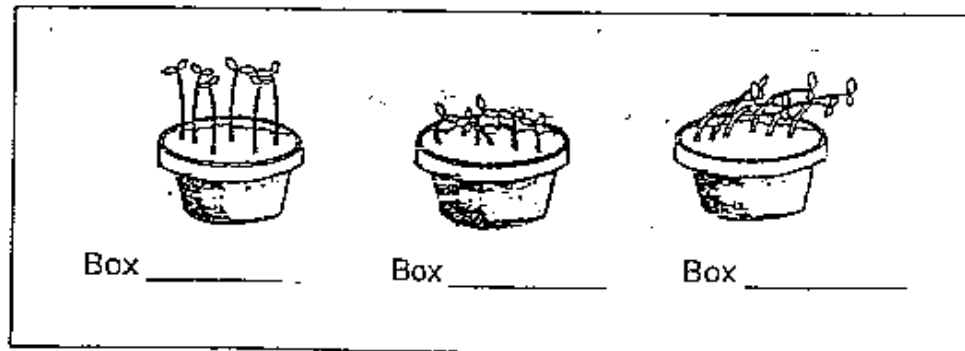


Then, she put each pot into Box A, B and C.



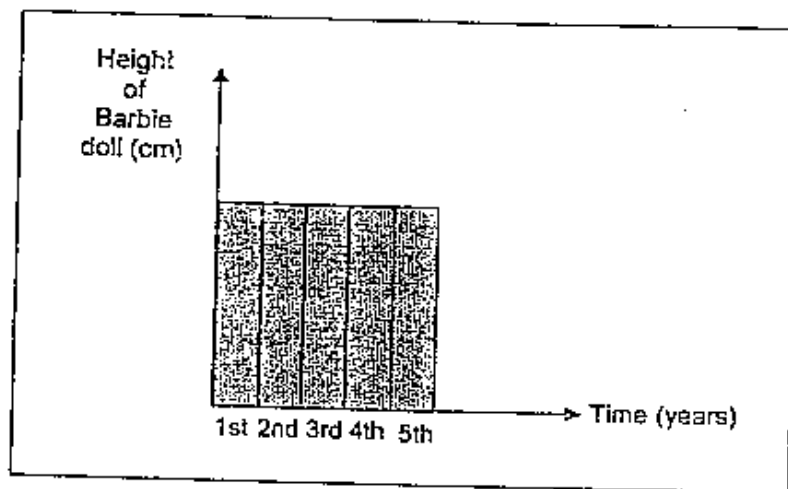
A few days later, Lydia took out the pots from the boxes.

Write A, B or C under each pot below to show which box the seeds had been put in. (3m)

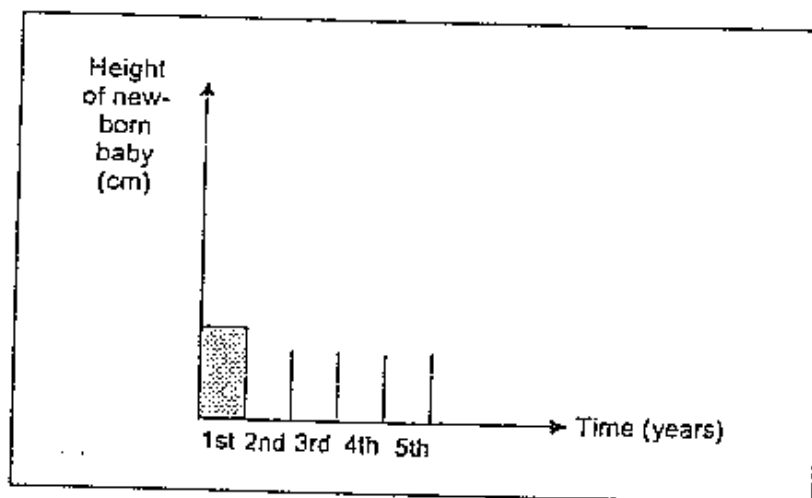




17. The graphs below shows correctly the height of a Barbie doll over a period of 5 years.



- a) In the graph provided below, draw correctly the height of a new-born baby over a period of 5 years. The first year is done for you. (1m)



- b) Based on the observation above, state one characteristic of a living thing. (1m)

A living thing can \_\_\_\_\_

18. Four girls stated that penguins and ostriches can be grouped together. These are their reasons:

Natalie : They lay eggs.  
Carrie : They cannot fly.  
Rachel : They are sea birds.  
Natasha : They feed on insects only.

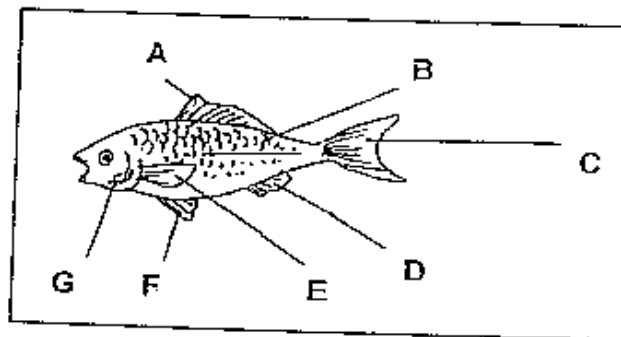
- a) Who made the correct statement? (1m)

\_\_\_\_\_

- b) Which group of animal do penguins and ostriches belong to? (1m)

\_\_\_\_\_

19. The diagram below shows a fish.



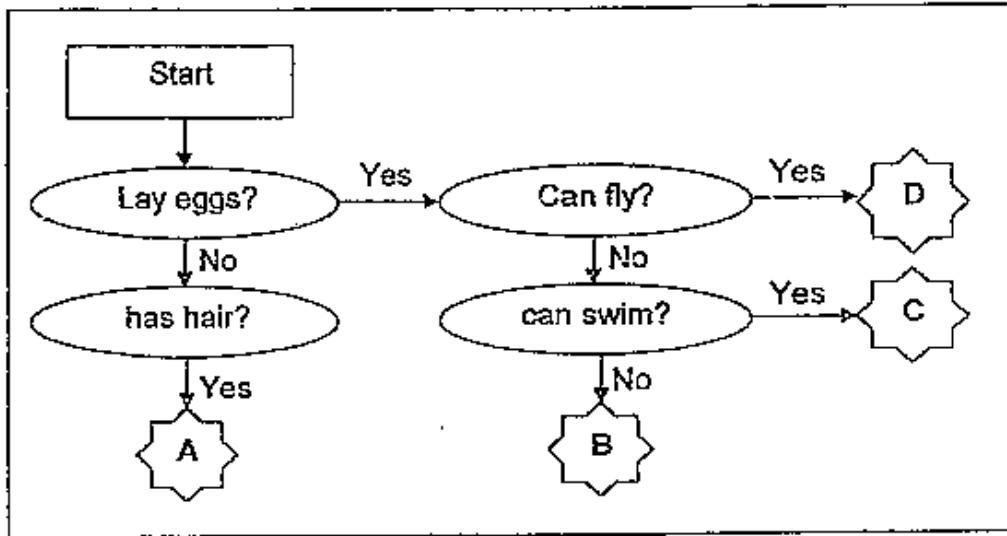
- a) Which part of the fish is the gill cover? (1m)

\_\_\_\_\_

- b) What is function of the part labelled C? (1m)

\_\_\_\_\_

20. Study the flow chart carefully.



Put the animals given below under the letter where they belong. (2m)

turtle      emu      moth      chimpanzee

A	B	C	D

21. Kristine made some observations on some animals. She then recorded her findings.

- Turtle : It hides itself in its shell when it is frightened.
- Polar Bear : Its thick fur keeps it warm.
- Porcupine : It uses its quills (spikes) to hit its enemy.

Give one function of the outer-covering in animals based on the above observations (1m)

---

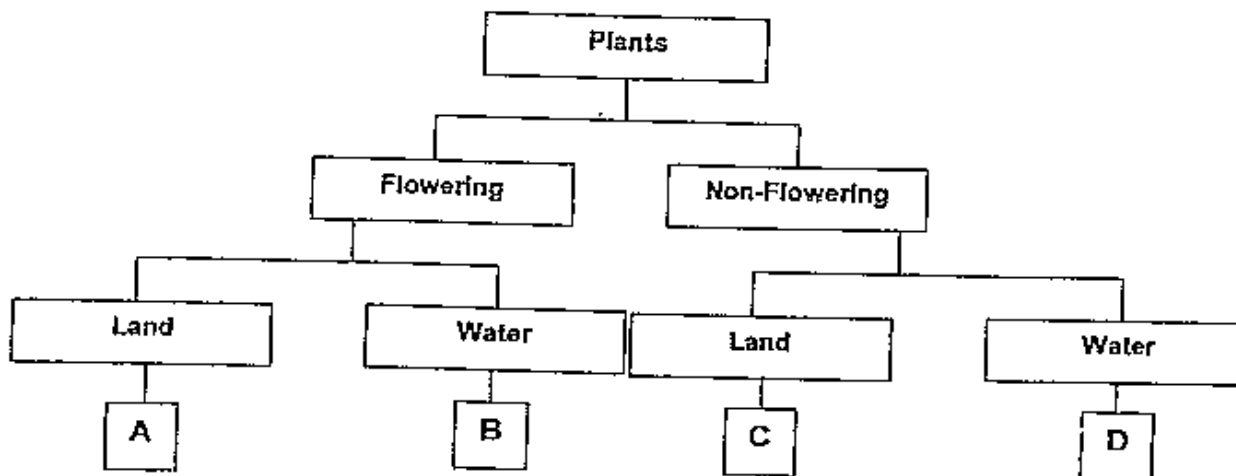


---

22. The table below gives information on four plants, P, Q, R and S based on two characteristics.

Characteristic	P	Q	R	S
bears fruit		✓		✓
grows on land			✓	✓

From the information above, where do plants Q and R belong in the following classification table?



- a) Q belongs in Group \_\_\_\_\_ (1m)
- b) R belongs in Group \_\_\_\_\_ (1m)
23. Use the words in the box below to fill in the correct blanks.  
Use each word once only. (2m)

silverfish      dragonfly      housefly      butterfly

Insects with one pair of wings

Insects with two pairs of wings

Insects with no wing

24. The picture below shows a mushroom.



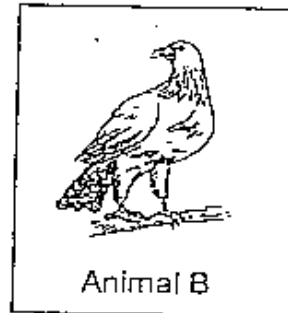
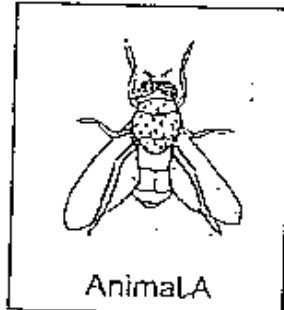
a) Can a mushroom make its own food? (1m)

---

b) In which group of living thing does a mushroom belong to? (1m)

---

25. Based on what you see in the picture, state 1 similarity and 1 difference between the 2 animals below.  
(Do not mention about their size and shape.)



a) 1 similarity between the 2 animals above. (1m)

---

---

b) 1 difference between the 2 animals above. (1m)

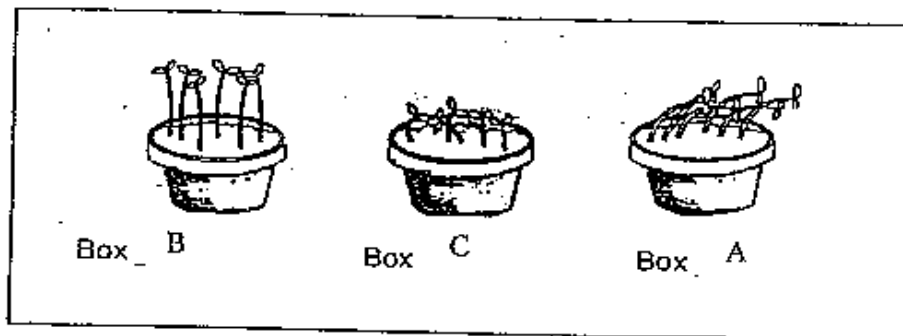
---

---

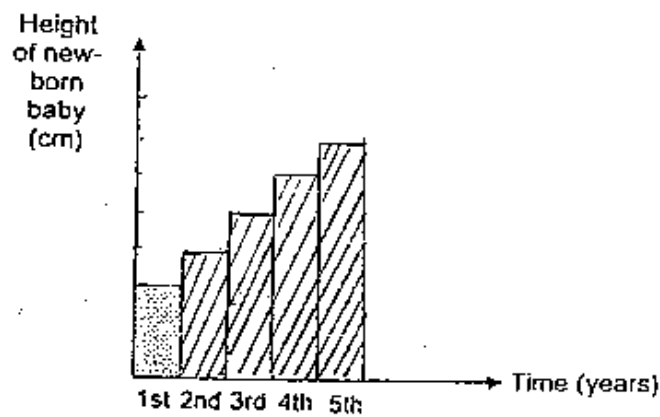
**Answer Sheets**  
***Methodist Girls' Pri 3 CA1 / 2006 Science***

- |       |       |       |       |       |
|-------|-------|-------|-------|-------|
| 1) 1  | 2) 3  | 3) 2  | 4) 4  | 5) 4  |
| 6) 4  | 7) 3  | 8) 3  | 9) 4  | 10) 4 |
| 11) 3 | 12) 4 | 13) 3 | 14) 2 | 15) 1 |

Q16.



Q17a.



b. Living thing can reproduce.

Q18a. Natalie and Carrie made the correct statement.  
b. They belonged to birds group

- Q19a. Part G  
b. It helps to propel the fish through water.
- Q20. A : chimpanzee  
B : emu  
C : turtle  
D : moth
- Q21. The outer covering is to protect them.
- Q22. Q belongs in Group : B  
R belongs in Group : C
- Q23. Insects with one pair of wings : housefly  
Insects with two pairs of wings : dragonfly, butterfly  
Insects with no wings : silverfish
- Q24a. No, mushroom cannot make its own food.  
b. It belongs to fungi group.
- Q25a. Similarity : Both have wings to fly.  
Different : Animal A is an insects with six legs while Animal B is a bird with 2 legs