

**AI TONG SCHOOL
CONTINUAL ASSESSMENT ONE (2004)
PRIMARY 3**

CIA

NAME : _____ ()

MARKS : _____

CLASS : 3 ()

DURATION : 1HR 30 MIN

DATE : _____

PARENT'S SIGNATURE: _____

Section A (20 x 3 marks)

Choose the correct answer and write its number in the brackets provided

1. A drinking glass is a non-living thing because _____.

A: needs air, food and water.

B: cannot move by itself.

C: responds to changes.

D: cannot reproduce.

(1) D only

(2) A and C

(3) B and D

(4) A, B, C and D

()

2. Which one of these plants responds to stimulus more quickly than the others?

(1) Rose plant

(2) Cactus

(3) Mimosa

(4) Pong Pong Tree

()

3. Which one of these things cannot move on its own?

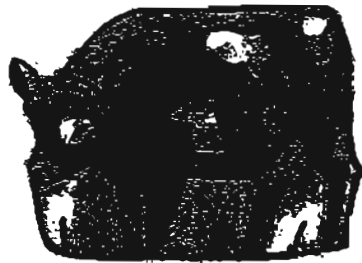
(1)



(2)



(3)



(4)



()

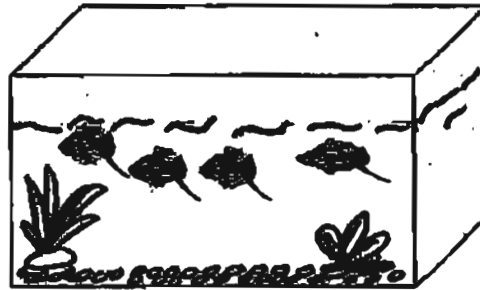
4. Which of these statements is false?

- (1) Non-living things cannot reproduce
- (2) Living things can respond to the weather.
- (3) Living things can only reproduce by laying eggs.
- (4) Non-living things does not need air, food and water.

()

5. The fishes are swimming near the water surface because they depend on _____.

Fish Tank



- (1) food
- (2) water
- (3) air
- (4) light

()

6. Last year, Lina found that she could not reach the top cabinet without having to stand on a stool. This year she is able to reach it without any help. Which characteristic of living things does this show?

Living things _____.

- (1) respond to changes
- (2) grow
- (3) reproduce
- (4) die

()

7. Study this table carefully.

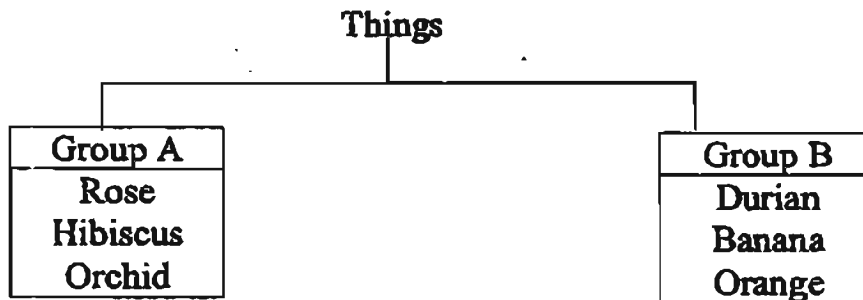
Group A	Group B
Helicopter	Baby
Butterfly	Penguin
Aeroplane	Toad
X	Y

What could be X and Y?

X	Y
(1) Car	Pigeon
(2) Pigeon	Lizard
(3) Lizard	Tiger
(4) Dragonfly	Housefly

()

8. Study the classification table below carefully.



What could be the heading for Group A and Group B?

Group A	Group B
1) Non- living things	Living things
2) Not colourful	Colourful
3) Flowers	Fruits
4) Eaten by man only.	Eaten by animals only

()

9. Which item does not belong to the group below?

papaya	hibiscus	durian	lemon	mango
---------------	-----------------	---------------	--------------	--------------

- (1) lemon
- (2) hibiscus
- (3) mango
- (4) papaya

(-)

10. Which animal does not reproduce by laying eggs?

- (1) A frog
- (2) A parrot
- (3) A guppy
- (4) A mosquito

(-)

11. Which one of the statements is **FALSE** about Fish?

- (1) They live in water only.
- (2) They are divided into head, thorax and abdomen.
- (3) Their fins help them to move around.
- (4) They breathe through their gills.

(-)

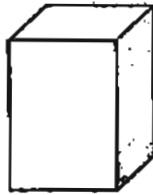
12.



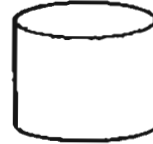
Similar

Which shape is suitable to the can shown above?

(1)



(2)



(3)

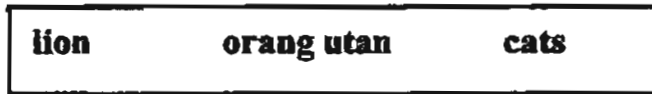


(4)



()

13.



The animals above have been grouped according to their outer covering.
Which other animal can be placed in this group?

- (1) Fish
- (2) Lizard
- (3) Dog
- (4) Swan

()

14.

<u>Group A</u>	<u>Group B</u>
Goldfish	Owl
Guppy	Penguin

Which heading would you give to Group A and B?

Group A	Group B
1) Fish	Mammal
2) Fish	Birds
3) Mammal	Insects
4) Mammal	Fish

()

15. A goat and a lion can be grouped together because they _____

- (1) have the same outer covering
- (2) both eat plants
- (3) move by swimming
- (4) both lay eggs

()

16. Which of the following cannot have young?

- (1) A butterfly
- (2) A dog
- (3) A computer
- (4) A hamster

()

17. Which animal does not eat the food as shown in the table?

	Animal	Plant	Animal	Plant and Animal
(1)	Chicken			✓
(2)	Hippopotamus		✓	
(3)	Giraffe	✓		
(4)	Lizard		✓	

()

18.

X	Z
Clown Fish	Snail
Shark	Lion

The animals above have been classified according to _____.

- (1) their outer covering
- (2) their movement
- (3) their shape
- (4) the place they live in

()

19. I cannot swim. I have scales and I move with my whole body. I am a

- (1) goldfish
- (2) squirrel
- (3) cobra
- (4) duck

()

20. What is the difference between an animal and a plant?

- (1) An animal needs air but a plant does not.
- (2) An animal can move but the plant cannot.
- (3) A plant can make food but an animal cannot.
- (4) A plant dies without water but an animal does not.

()

Section B (5 X 2 marks)

Fill in the blank with the correct answers. Use each word once only.

grow	shells	respond	scales	fur
birds	reproduce	die	mammals	micro organisms

21. Living things may _____ when they become old or sick.

22. Snakes have _____ as their outer covering.

23. Living things that we cannot see with our eyes only are called

24. _____ have hair on their bodies and give birth to their young.

25. When living things _____, their size and appearance change.

Section C (5 X 2 marks)

Write 'T' for True sentences and 'F' for False sentences in the brackets given.

26. All birds can fly. ()

27. A spider is an insect. ()

28. Classification is a way of grouping things together. ()

29. To ensure that living things do not become extinct they reproduce. ()

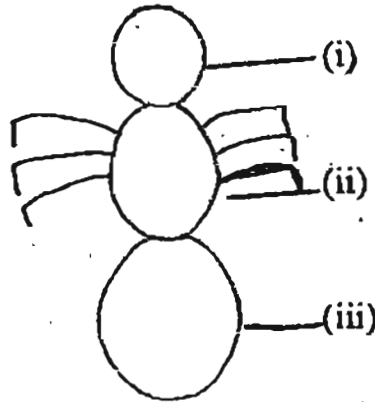
30. A girl is an example of a mammal. ()

Section C (5 x 4marks)

Answer all the questions in the spaces provided.

31. The drawing shows an incomplete ant.

(a) Label the abdomen, thorax and head. (3m)



Name these parts.

(i) _____

(ii) _____

(iii) _____

(b) Complete the picture by drawing in the legs. (1m)

32.



Look at the picture above.

(a) Name two living things (2m)

(i) _____

(ii) _____

(b) Name two non-living things (2m)

(i) _____

(ii) _____

33. (a) Circle the animal that does not belong to the group? (2m)



bat



penguin



eagle



parakeet



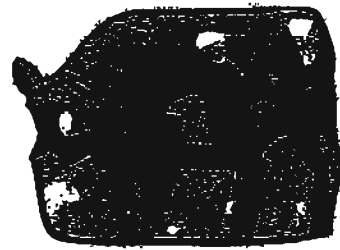
sparrow

(b) Why doesn't this animal belong to this group? (2m)

34.



kangaroo



cow

How different are they in their movement?

(a) _____ (2m)

How similar are they with regards to

(b)

The food they eat?

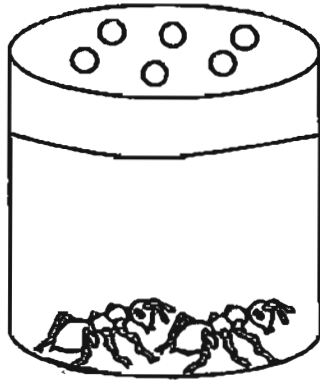
(1 m)

(c)

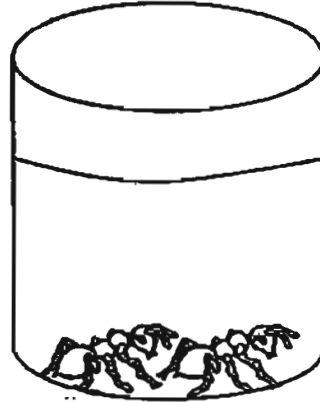
Reproduction
its young

(1 m)

35. Yu Ling is doing an experiment on living things. She kept two ants each in Containers A and B. Both containers are covered but the lid of Container A has some holes on it. Also, no food or water was given to the ants for many days.



Container A



Container B

a) Which ants do you think will die first? Why?(2m)

b) After a month, Yu Ling found out that the ants in Container A died. Why is this so? (2m)

AI TONG SCHOOL
CONTINUAL ASSESSMENT ONE (2004)
PRIMARY 3 SCIENCE

CA7

- 1) 3 31) i) Head ii) Thorax iii) Abdomen
2) 3 32) a) i) Boy ii) Fish
3) 1 b) i) Fishing rod ii) Shoes
4) 3 33) a) Circle : penguin
5) 3 b) The penguin do not fly but the rest do fly.
6) 2 34) a) The kangaroo hop, but the cow walk.
7) 2 b) The kangaroo eat plant The cow eat plant
8) 3 c) The kangaroo give The cow give birth
 birth to young to young.
9) 2
10) 3 35) a) Container B ants will die first because it
 does not have air, food and water.
11) 2 b) Yu Ling does not give Container A ants water
 and food.
12) 2
13) 3
14) 2
15) 1
16) 3
17) 2
18) 4
19) 3
20) 3
21) die
22) scales
23) micro-organisms
24) Mammals
25) grow
26) F 27) F 28) T 29) T 30) T